



*Chambers of Trades
and Crafts*

FRENCH NETWORK
OF CHAMBERS
OF TRADES
AND CRAFTS

THE LEADING SUPPORT NETWORK FOR CRAFT BUSINESSES



**WITH THE CMA
NETWORK, THE
CRAFT INDUSTRY
HAS A FUTURE**





“Future craftspeople will have to master traditional know-how which has been handed down, as well as cope with the requirements of their day, incorporating the major changes related to the way we live and

our associated digital tools. Our network’s motto: enable craft businesses to conduct their business under the best possible circumstances, now and in the future.”

Bernard Stalter, President of the APCMA

The Craft Industry, a leading business in France

The craft industry is an economic sector in its own right which, through its businesses, trades and values, contributes to the impetus of the French territories. With 1.3 million craft businesses, 3.1 million workers and 300 billion euros in turnover, the craft industry has tremendous potential for growth, innovation and qualified jobs.



140,000

apprentices trained each year, which is 35% of all apprentices in France



250

trades and 510 craft businesses



1.3

million craft businesses



4

sectors: food and drink, construction, manufacturing and services

OUR DNA

A NETWORK SERVING CRAFT BUSINESSES

Run by people who are craftspeople themselves, the Chambers of Trades and Crafts (CMA), in mainland France and its overseas territories, support craft businesses throughout their lifetime, from creation to change of ownership, with the aim of promoting their development, competitiveness and longevity. The CMA are public institutions under the authority of the French Ministry of Economy and Finance, and, along with their partners, such as professional organisations and local authorities, ensure that the craft industry is recognised in its own right in the economy, at a national and European level. They also ensure that their interests are taken into account in development programmes, laws and regulations, and then make sure these policies are properly implemented. The CMA are federated under a national institution: the Permanent Assembly of Chambers of Trades and Crafts (APCMA).



1 national institution
which coordinates the network



88
CMA distributed
throughout mainland
France and overseas



2,500
elected craftspeople
heading
the CMA

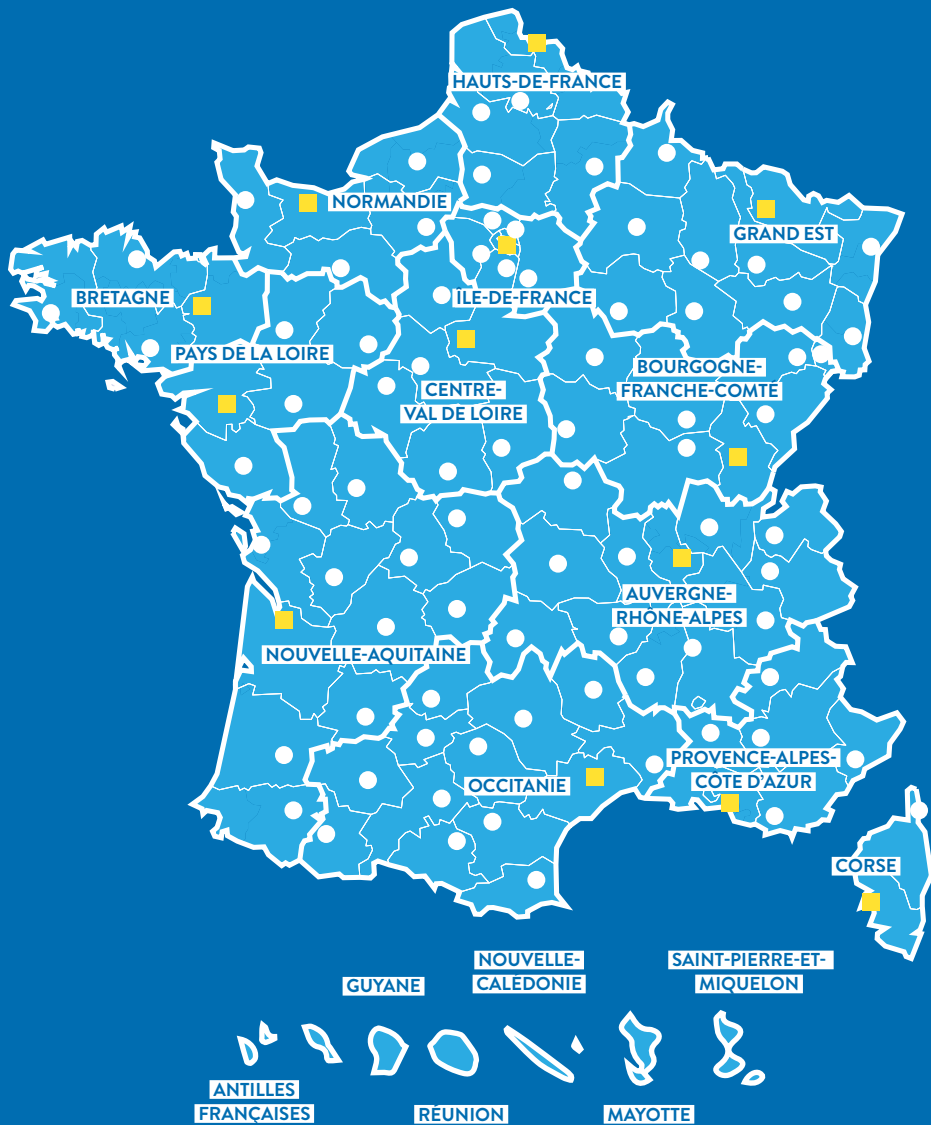


112
Apprentice
Training
Centres (CFA)



11,000
employees
working for craft
businesses

A network spanning all the territories, close to the businesses



- Regional CMA
- Departmental CMA and delegations



Involvement in the development of craft businesses



400,000
project sponsors
and business leaders
informed and advised
each year

The Chambers of Trades and Crafts in mainland France and overseas territories work very closely with craft businesses in order to support them in their

development throughout their lifetime, from identifying a project through to the business' change of ownership. The CMA offer a full range of effective services which enable actors to focus their efforts on their know-how and production facilities. To sustain this dynamic approach, the CMA network works closely with the Innovation Centres for Crafts, genuine resource centres which are able to identify future trends and devise future solutions which are the most suitable for craft businesses.

Involvement in training future craftspeople

With **5,000** trainers and some **600** training courses to its credit, the CMA network helps young people, as well as those who are retraining or seeking employment, who want to learn a trade for the future which is specific and long-term. The network's 112 Training Centres (CFA) currently offer over 65 qualifications developed with professional organisations, to meet the requirements of craft businesses in terms of skilled workers. These training courses are at the forefront of educational innovation and their curricula include new technologies and techniques to better prepare future professionals. The craft qualifications are registered in the French National Directory of Professional Certification (RNCP) and are accessible through initial or continuing training, sandwich courses or recognition of prior learning (VAE).



80,000
apprentices trained
each year

Involvement in the attractiveness of territories



The CMA take steps to strengthen their role in developing territories

where preserving the craft industry is a key lever for a dynamic economy and a factor for social cohesion. Alongside the local government bodies and public authorities, they contribute to their attractiveness, guaranteeing that the regional public policies are coherent with and match the expectations of the businesses. In overseas territories, the craft industry plays a dominant role in the local economy. For example, the Centre for Innovation and Research into Tropical Construction (CIRBAT) particularly deals with craftspeople working in a tropical environment.



6,400
recommendations issued to
public authority and local
government bodies

A NETWORK WHICH LOCAL

**With 88
establishments,**

the CMA network has adapted to territorial government reforms. Now structured according to the new regions, the CMA have maintained a close relationship with the businesses and other regional stakeholders, accompanied by an in-depth knowledge of local issues they are confronted with on a daily basis.

COMM

ACTIV

**The APCMA and the CMA
are special partners**

of professional organisations in the craft industry and are consultative partners of local, national and European authorities. The network's goal is to bring the realities of the field to public policy-makers by playing a central and pivotal role with all those involved. Finally, the CMA are "resource" centres for the authorities regarding the craft industry.

**WORK
IS**



COMMITTED

**The CMA network
connects
2,500 business
leaders elected**

by their peers every 5 years, who know the realities of the field and the needs of the local economy. This is what gives the network its strength and expertise. Alongside them, 11,000 employees work for craftspeople every day.

E



OUR ROLES

1

State roles

The CMA have the following roles:

- managing the Business Procedure Centres (CFE);
- managing the trade register (RM) in each department;
- recording apprenticeship agreements signed by the companies in the crafts businesses record, regardless of the trade and CFA.

2

Services for all...

The CMA network has built up a common, identical range of services throughout the entire territory.

Committed to a modernising approach, the CMA believe in stepping up and improving the quality of the services provided to craft businesses with tailor-made solutions to match their expectations.

3

... And for everyone

The CMA work for a very wide public, including project sponsors, business leaders, co-working spouses, apprentices and buyers.

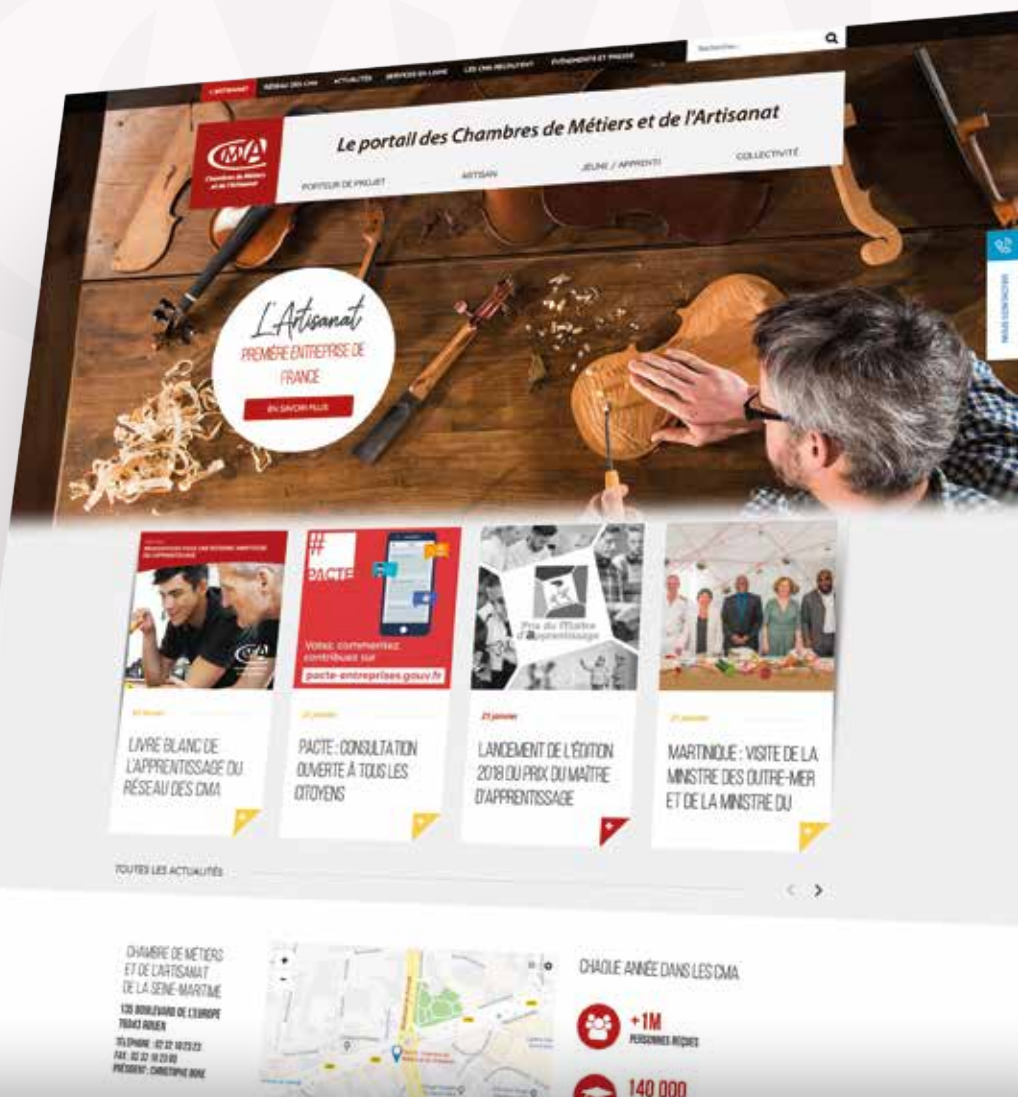
They have therefore developed effective, tailored services to meet the needs of each profile: business development, apprenticeship and training, legal issues, market research, funding assistance, etc.

The CMA network offers tailored training programs at regional Trades and Crafts Universities (URMA). Anyone wishing to have a trade in the craft industry will be supported in being trained in a trade according to their personal background.

To access **all CMA support services**

go to

Artisanat.fr >



Chambres de Métiers
et de l'Artisanat

With the CMA network,
the craft industry has a future



***Chambers of Trades
and Crafts***

WITH THE CMA NETWORK, THE CRAFT INDUSTRY HAS A FUTURE

artisanat.fr 

